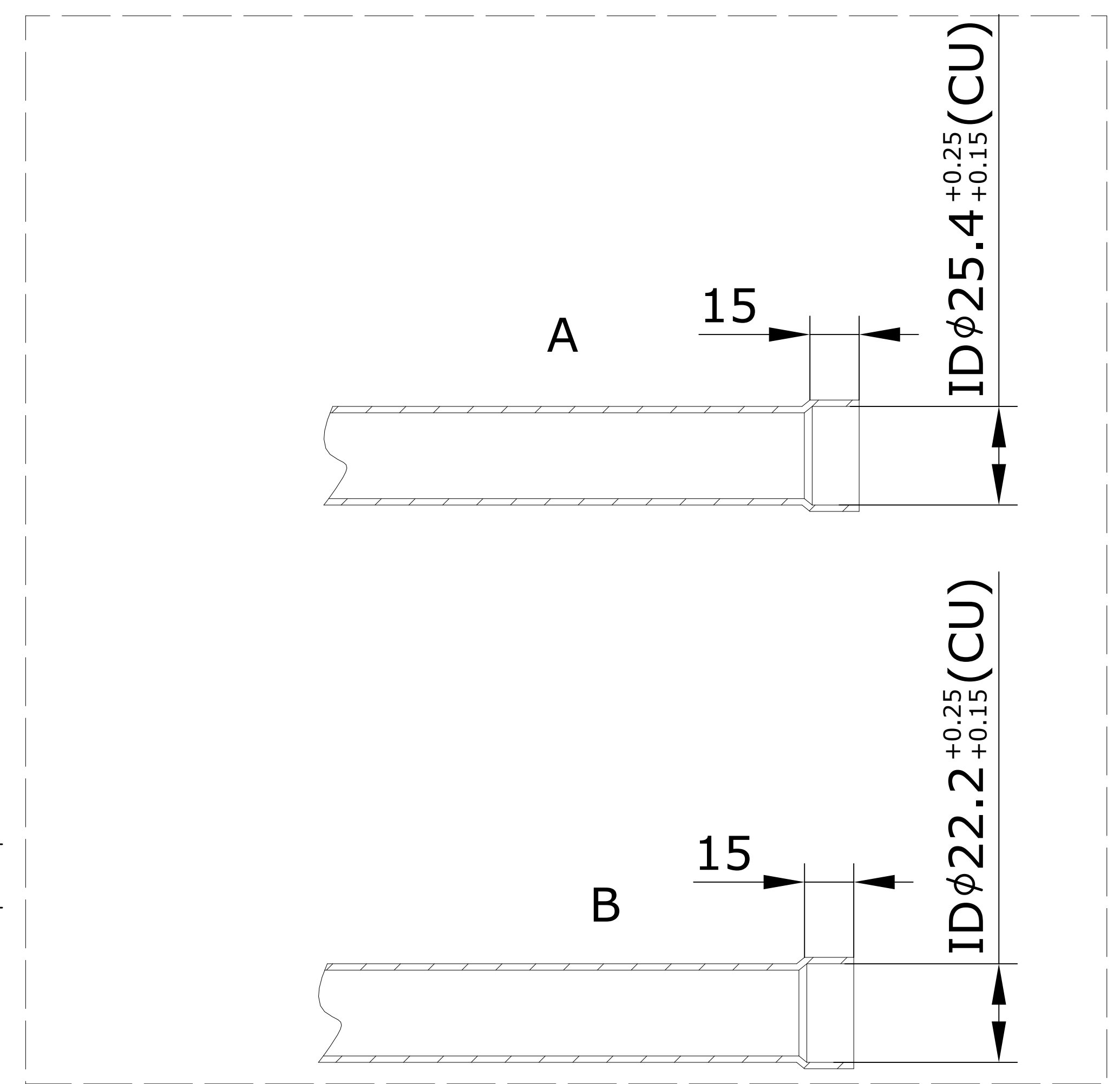
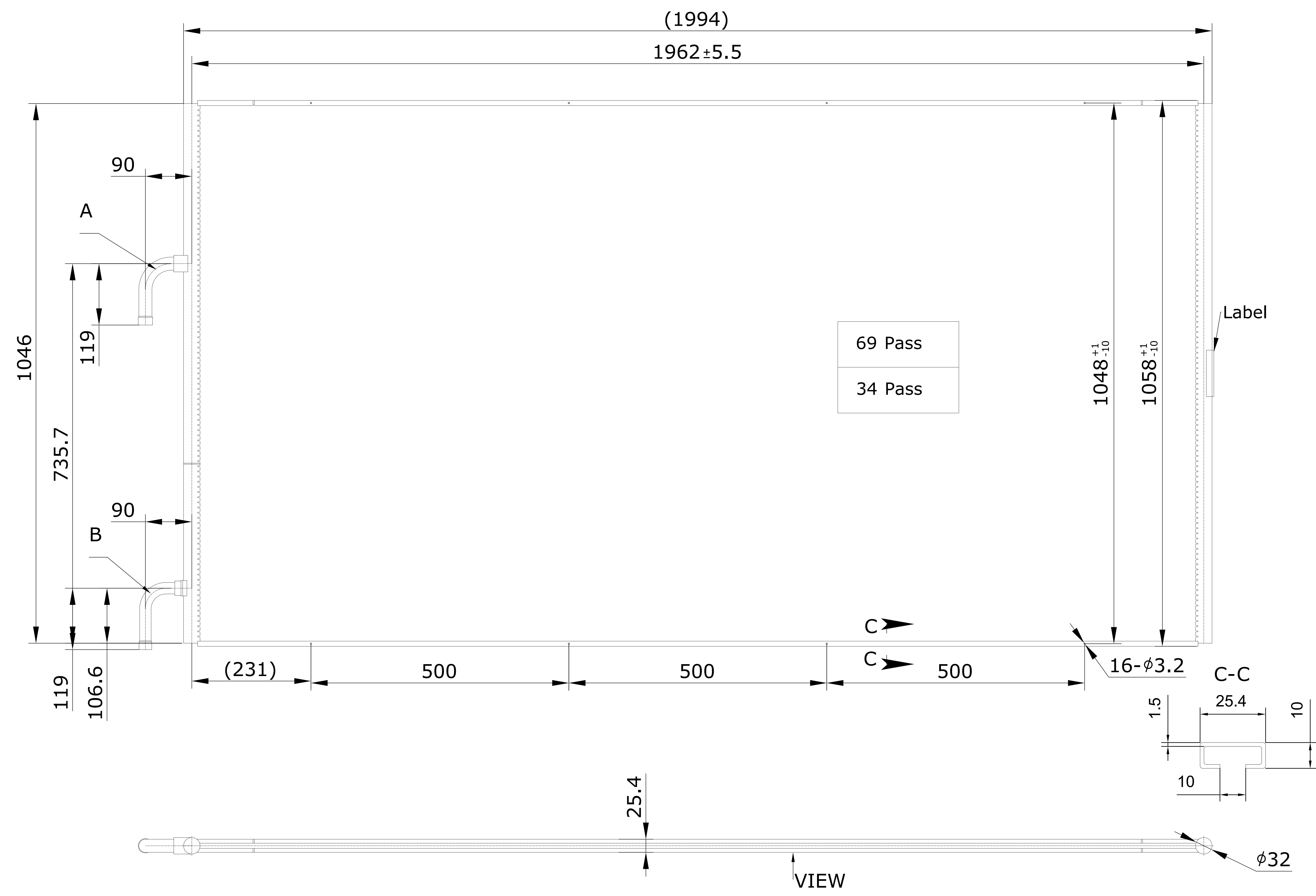


| Unspecified linear dimension tolerance (mm) | | | | | | | |
|---|------------|-------|------|--------|---------|----------|-----------|
| Tolerance class | Basic size | | | | | | |
| | 0.5-3 | 3-6 | 6-30 | 30-120 | 120-400 | 400-1000 | 1000-2000 |
| f | ±0.05 | ±0.05 | ±0.1 | ±0.15 | ±0.2 | ±0.3 | |
| m | ±0.1 | ±0.1 | ±0.2 | ±0.3 | ±0.5 | ±0.8 | |
| c | ±0.2 | ±0.3 | ±0.5 | ±0.8 | ±1.2 | ±2 | |
| ISO 2768-1 CLASS C (GB/T 1804 CLASS C) | | | | | | | |



- NOTES**
- DESIGN PRESSURE 4.5MPa
 - THE MINIMUM BURST PRESSURE OF THE PRODUCT IS THREE TIMES THE DESIGN PRESSURE
 - DIAGONAL DIFFERENCE MAX 11mm
 - TOLERANCE IF NOT SPECIFIED SHALL COMPLY WITH STANDARD ISO 2768-1 CLASS C (GB/T 1804 CLASS C)
 - SEAL 0.01~0.05Bar NITROGEN GAS IN THE PRODUCT
 - OTHER STANDARDS JB/T11967 EN378-2
 - THE INLET AND OUTLET PIPES ARE COPPER PIPES

PRODUCT PARAMETERS

| | |
|---------------------------------------|-------------------------|
| TUBE NUMBER | 103 |
| TUBE TYPE | 25.4*1.3- 16 |
| TUBE MATERIAL (LONG USING LIFE ALLOY) | LLA9153(3F03)+Zn- H112 |
| MANIFOLD TYPE | φ32 |
| FIN TYPE | LOUVERED 16*0.08 FPI 21 |
| FIN MATERIAL | AA4343/3003/4343 |
| PASS | 69/34 |

Change log

| No. | Date | Modify content |
|-----|------|----------------|
| | | |
| | | |
| | | |
| | | |
| | | |
| | | |
| | | |
| | | |
| | | |
| | | |



DESCRIPTION:
Microchannel heat exchanger

MODEL:
RC-2000-I (32 mm)

REV.:
A0

| | | |
|-----------------------------|-----------------|---------------|
| VIEW | CODE: | CREAT: |
| | 021U0266R | AUDIT: |
| APPROVED BY CUSTOMER | PROCESS: | |
| SIGNATURE: | APPROVE: | |