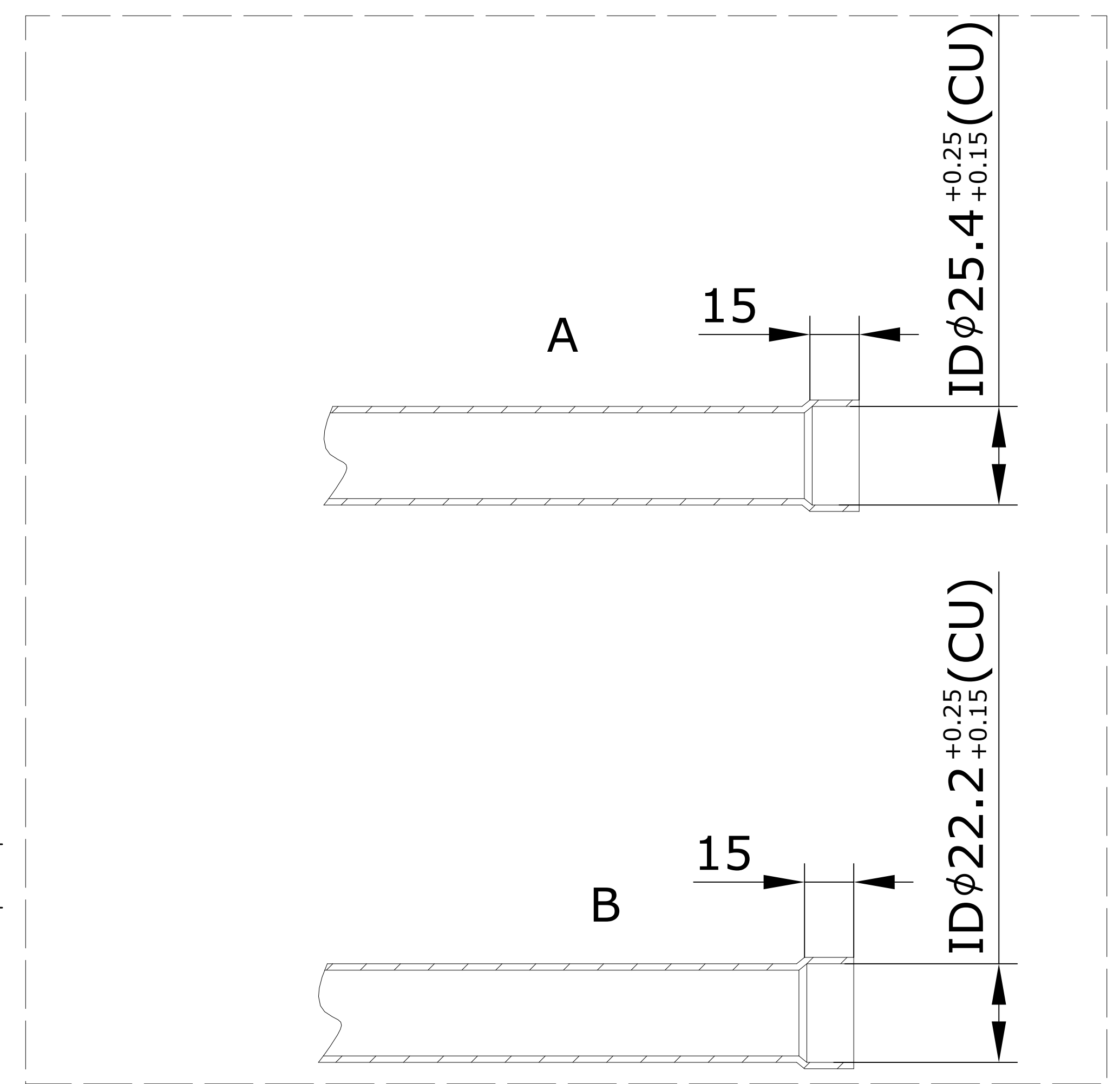
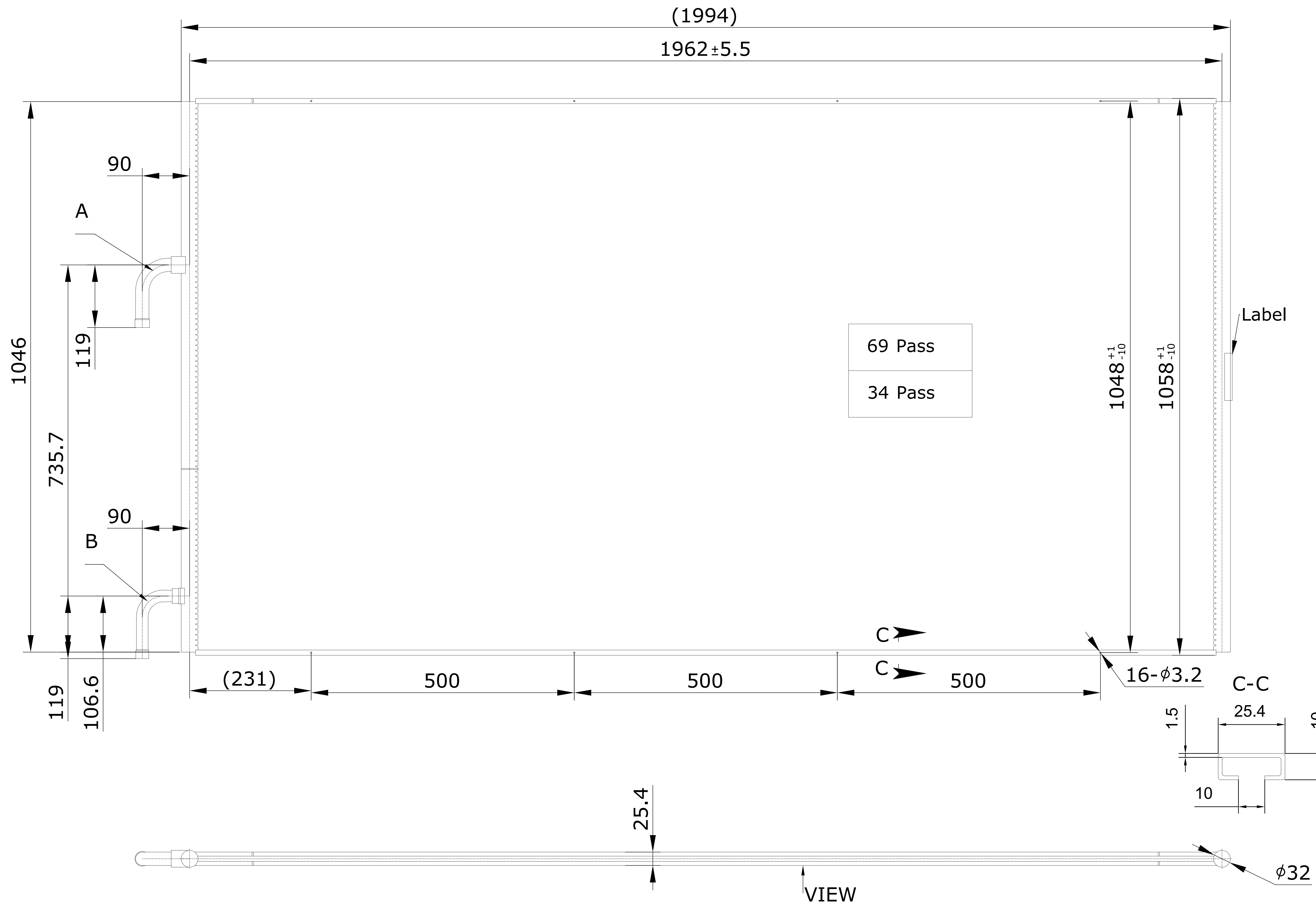


Unspecified linear dimension tolerance (mm)		Basic size						
Tolerance class	0.5~3	3~6	6~30	30~120	120~400	400~1000	1000~2000	
f	±0.05	±0.05	±0.1	±0.15	±0.2	±0.3		
m	±0.1	±0.1	±0.2	±0.3	±0.5	±0.8		
c	±0.2	±0.3	±0.5	±0.8	±1.2	±2		
ISO 2768-1 CLASS C (GB/T 1804 CLASS C)								



- NOTES
- DESIGN PRESSURE 4.5MPa
 - THE MINIMUM BURST PRESSURE OF THE PRODUCT IS THREE TIMES THE DESIGN PRESSURE
 - DIAGONAL DIFFERENCE MAX 11mm
 - TOLERANCE IF NOT SPECIFIED SHALL COMPLY WITH STANDARD ISO 2768-1 CLASS C (GB/T 1804 CLASS C)
 - SEAL 0.01~0.05Bar NITROGEN GAS IN THE PRODUCT
 - OTHER STANDARDS JB/T11967 EN378-2
 - THE INLET AND OUTLET PIPES ARE COPPER PIPES

PRODUCT PARAMETERS	
TUBE NUMBER	103
TUBE TYPE	25.4*2- 20
TUBE MATERIAL	LLA9153(3F03)+Zn- H112
(LONG USING LIFE ALLOY)	
MANIFOLD TYPE	φ32
FIN TYPE	LOUVERED 25.4*0.08 FPI 23
FIN MATERIAL	AA4343/3003/4343
PASS	69/34

Change log		
No.	Date	Modify content



DESCRIPTION: Microchannel heat exchanger		REV. A0
MODEL: RC-2000-I (32 mm)		
VIEW 	CODE: 021U0266R	CREAT: AUDIT:
APPROVED BY CUSTOMER SIGNATURE:	PROCESS: APPROVE:	