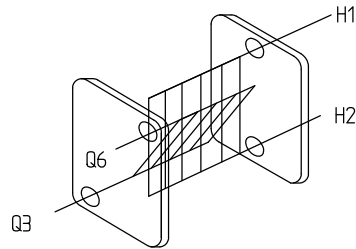
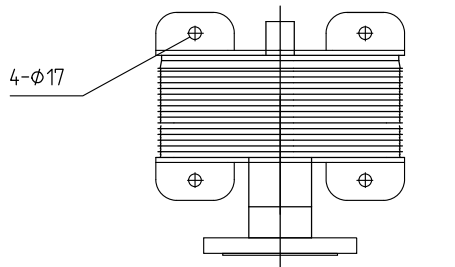
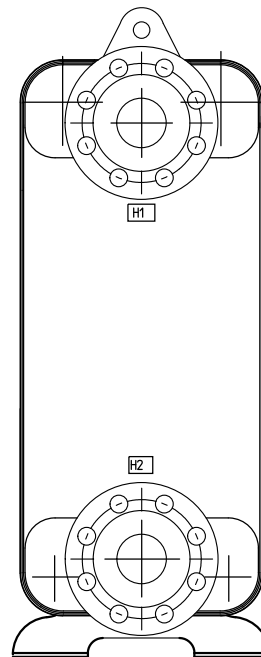
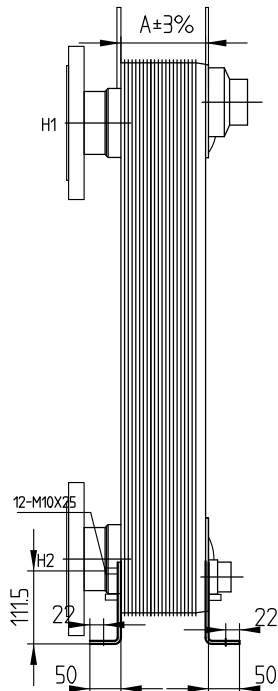
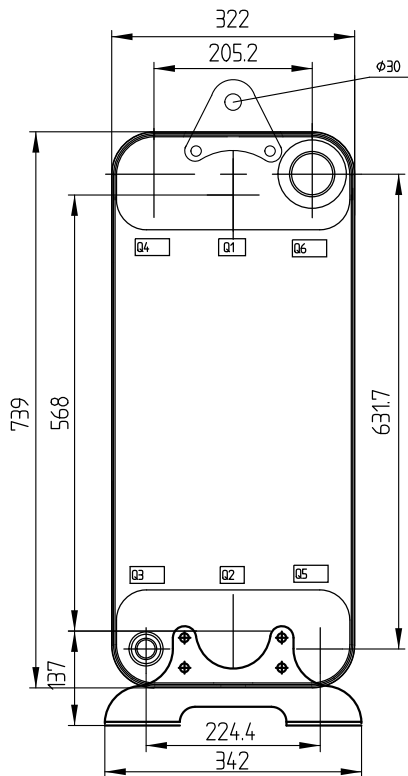
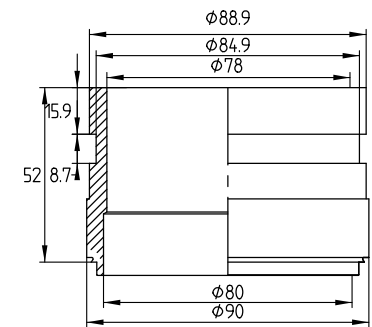
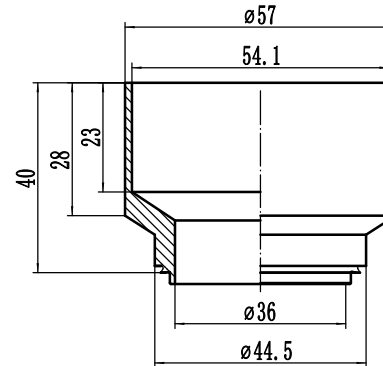


CONTROLLED

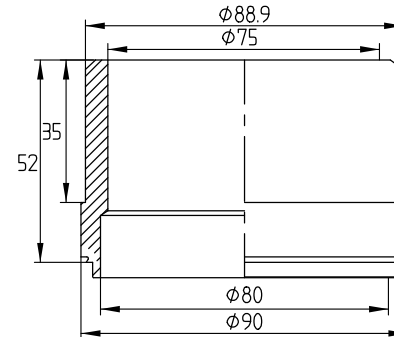


Q3
H2"1/8(H421)
Welded Connection

Q6
H3"1/8(LB830)
Victaulic Connection



H1-H2
H3"1/8(LB831)
Welded Connection



- Note:1.Weld LB831 extension pipe on H1H2(pipe length 50mm)
 2.Weld DN80 304 flange on pipe(flange standard PN16 RF GB/T9115.1-2000)
 3.Add unit foot and lifting lug

		DESIGN DATA	
DESIGN PRESSURE		4.5MPa	
TEST PRESSURE		6.75MPa	
DESIGN TEMPERATURE		-196/+225	
LEAKAGE TEST		Helium Test	
PLATE MATERIAL		316L	
PIPE MATERIAL		304	
FRAME MATERIAL		304	

ID	RIDAN Code	Drawing No.	Model	Plates(n)	A	WEIGHT	VOLUME
1	111B6002R	2305532	210	80	217	71.9Kg	H1H2:20L/Q3Q6:19.5L

Assembly drawing	DEPARTMENT	Sales	DATE	2022/05/06	SCALE			
	DESIGNER	JLN	DATE	2022/05/06				
	INSPECTOR	Z JF	DATE	2022/05/06	DESIGNATION			RD-210-80-4.5-HQ-H1H2Q6 (H3"1/8)/Q3(H2"1/8)/12-M10*25
	APPROVAL	FL	DATE	2022/05/06	DRAWING NO.			2305532