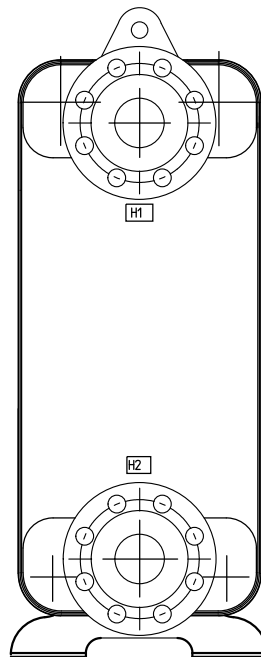
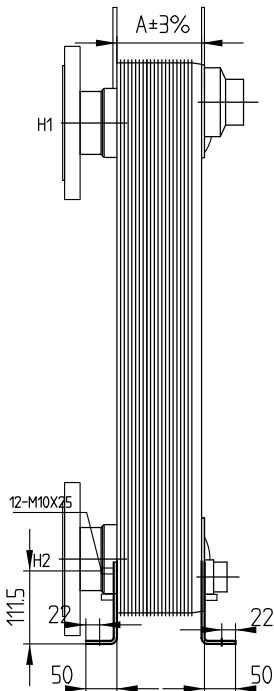
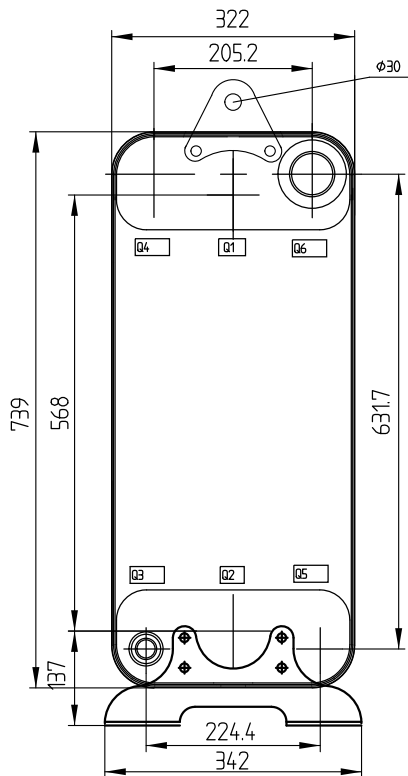
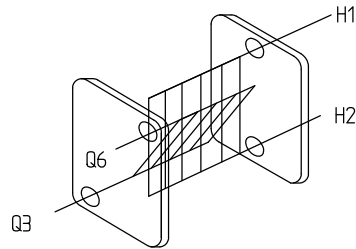
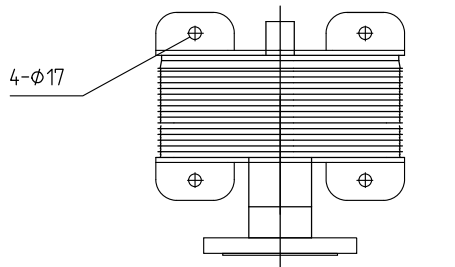
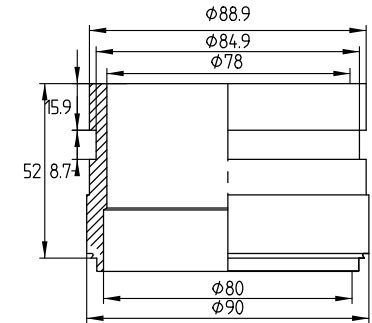
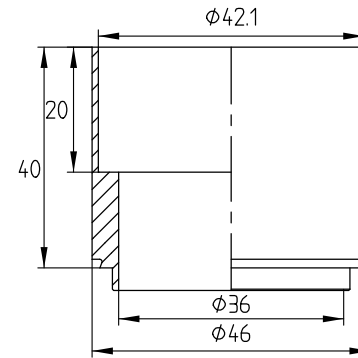


CONTROLLED

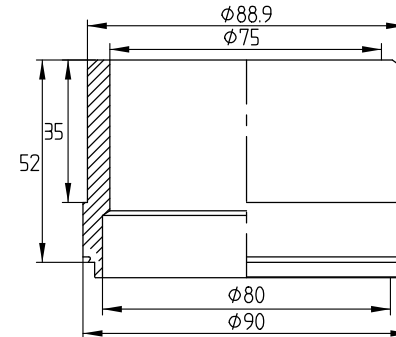


Q3
H1"5/8(H4152)
Welded Connection

Q6
H3"1/8(LJ830)
Victaulic Connection



H1-H2
H3"1/8(LB831)
Welded Connection



- Note: 1. Weld LB831 extension pipe on H1H2 (pipe length 50mm)
 2. Weld DN80 304 flange on pipe (flange standard PN16 RF GB/T9115.1-2000)
 3. Add unit foot and lifting lug

DESIGN DATA	
DESIGN PRESSURE	3.0MPa
TEST PRESSURE	4.5MPa
DESIGN TEMPERATURE	-196/+225
LEAKAGE TEST	Helium Test
PLATE MATERIAL	316L
PIPE MATERIAL	304
FRAME MATERIAL	304

ID	RIDAN Code	Drawing No.	Model	Plates(n)	A	WEIGHT	VOLUME
1	021H4619R	2305514	210	120	321	105Kg	H1H2:30L/Q3Q6:29.5L

Assembly drawing	DEPARTMENT	Sales	DATE	SCALE		
	DESIGNER	JLN	2022/05/06			
	INSPECTOR	ZJF	2022/05/06			
	APPROVAL	FL	2022/05/06			
DRAWING NO.		2305514		DESIGNATION		RD-210-120-3.0-HQ-H1H2Q6(H3"1/8)/Q3(H1"5/8)/12-M10*25
				REV		0